

# *atharva*

Exclusive Luxury Homes  
Sector-109, Gurgaon (Near Delhi Border)



ओं ऊर्जस्वतो पयस्वती पृथिव्यां तिमिता मिता ।  
विश्वान्नं बिभ्रती शाले मा हिंसीः प्रतिगृह्णतः । ।

हे शाले ! तू आरोग्य पराक्रम से युक्त एवं धन धान्य से सम्पन्न दुग्ध, जल, रस आदि से परिपूर्ण पृथ्वी पर माप माप कर बनाई जा रही है, तू सब प्रकार के अन्नो को धारण करती हुई स्वीकार करते हुए स्वामी को सब प्रकार से सुखदाई हो ।

अथर्ववेद : 9-3-16

A house or building built in conformance with the Atharva Veda shall provide to the owner a healthy life, with plenty of milk, water, juices & good food. May it be a life of utopia, eternal bliss, happiness and prosperity.

Atharva-Veda : 9-3-16

ओं मा नः पाशं प्रतिमुचो गुरुभारो लघुर्भव ।  
वधूमिव त्वा शाले यत्र कामं भरामसि । ।

शिल्पी लोग शाला के जोड़ों को सुदृढ़ बनावें और अच्छी प्रकार लम्बी चौड़ी बना कर सुखदायिनी करें और कुलवधू के समान आवश्यकीय पदार्थो से उसको परिपूर्ण करें ।

अथर्ववेद : 9-3-24

A house or building should be built in a manner in which the joints are strong, & the foundations so powerful, that any calamity may be resisted, & should have all the provisions & amenities that the lady of the house requires.

Atharva-Veda : 9-3-24

**F**ind recluse from the hustle-bustle of the city at Atharva - an Eco-Friendly haven next to the Delhi-Gurgaon border. Within 5 to 7 minutes drive from IGI Airport & Dwarka Housings and within 2 to 5 minutes drive from 150 m Ring Road of Gurgaon, Palam Vihar & proposed Metro Corridor\*\*, Atharva offers airconditioned luxury homes in various shapes & sizes, with best imported finishes, be it tiles, bathroom fittings or else. With the necessary indulgences of a Private Club, a Swimming Pool, a Gymnasium, Tennis Courts, Spa, Steam Sauna, 24 hrs. power back-up, Modular Kitchen, Hi-tech security system, School and a Shopping Complex, Atharva is where your search for an exclusive luxury home ends. At Atharva, we make sure that most of your memories in life, are happy ones.



LOWER LEVEL



UPPER LEVEL

LAYOUT PLAN

**PENTHOUSE  
TYPE A**

Sales Area : 4370 sq. ft.  
Terrace Area : 940 sq. ft.

*at harima*

Exclusive Luxury Homes  
Sector-109, Gurgaon (Near Delhi Border)

- In the interest of maintaining high standards, all floor plans, layout plans, areas, dimensions and specifications are indicative and are subject to change as decided by the company or by any competent authority
- Soft furnishing, furniture and gadgets are not part of the offering



**RAHEJA**  
DEVELOPERS  
BUILDING . ADVANCED . LIFESTYLES

An ISO 9001:2000 certified company



LOWER LEVEL



UPPER LEVEL

LAYOUT PLAN

**PENTHOUSE  
TYPE B**

Sales Area : 3655 sq. ft.  
Terrace Area : 325 sq. ft.

*at harima*  
Exclusive Luxury Homes  
Sector-109, Gurgaon (Near Delhi Border)

- In the interest of maintaining high standards, all floor plans, layout plans, areas, dimensions and specifications are indicative and are subject to change as decided by the company or by any competent authority
- Soft furnishing, furniture and gadgets are not part of the offering



**RAHEJA**  
DEVELOPERS  
BUILDING. ADVANCED. LIFESTYLES

An ISO 9001:2000 certified company

LAYOUT PLAN

**PRESIDENTIAL  
TYPE A**

Sales Area : 4268 sq. ft.  
Lawn Area : 605 sq. ft.



UPPER LEVEL



LOWER LEVEL

Exclusive Luxury Homes  
Sector-109, Gurgaon (Near Delhi Border)

*at harima*

- In the interest of maintaining high standards, all floor plans, layout plans, areas, dimensions and specifications are indicative and are subject to change as decided by the company or by any competent authority
- Soft furnishing, furniture and gadgets are not part of the offering



**RAHEJA**  
DEVELOPERS  
BUILDING . ADVANCED . LIFESTYLES

An ISO 9001:2000 certified company



UPPER LEVEL



LOWER LEVEL

LAYOUT PLAN

**PRESIDENTIAL  
TYPE B**

Sales Area : 3243 sq. ft.  
Lawn Area : 805 sq. ft.

Exclusive Luxury Homes  
Sector-109, Gurgaon (Near Delhi Border)

*at h a r i m a*

- In the interest of maintaining high standards, all floor plans, layout plans, areas, dimensions and specifications are indicative and are subject to change as decided by the company or by any competent authority
- Soft furnishing, furniture and gadgets are not part of the offering



**RAHEJA**  
DEVELOPERS  
BUILDING . ADVANCED . LIFESTYLES

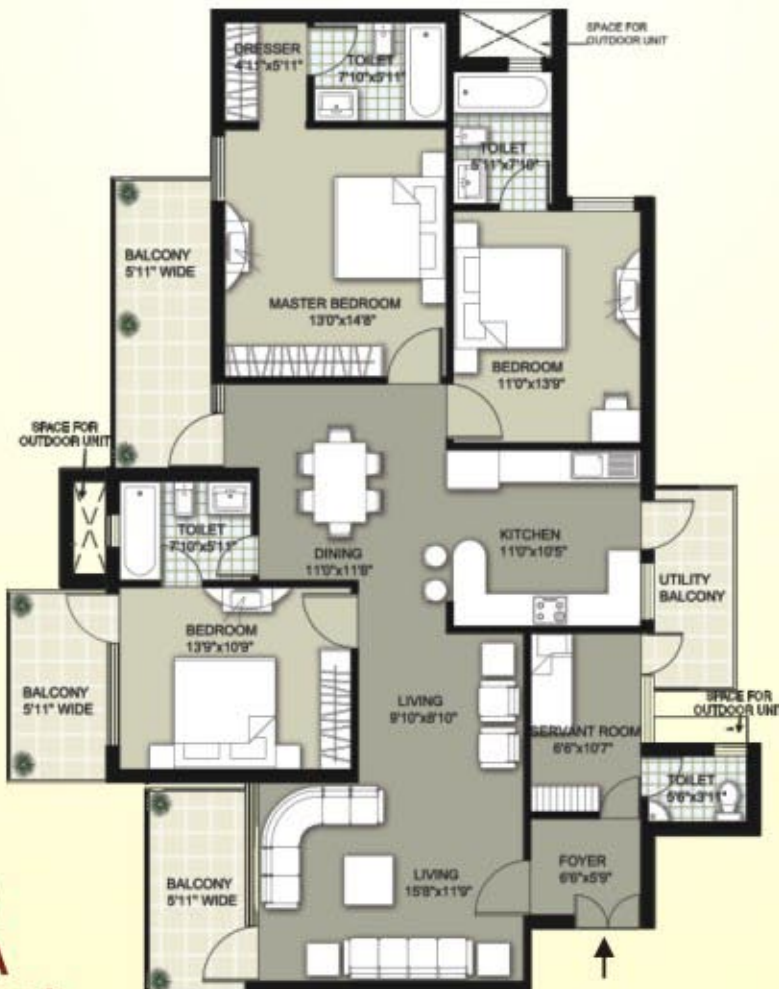
An ISO 9001:2000 certified company

LAYOUT PLAN



**4 BR TYPE A**

Sales Area : 2990 sq. ft.



**3 BR TYPE A**

Sales Area : 2251 sq. ft.



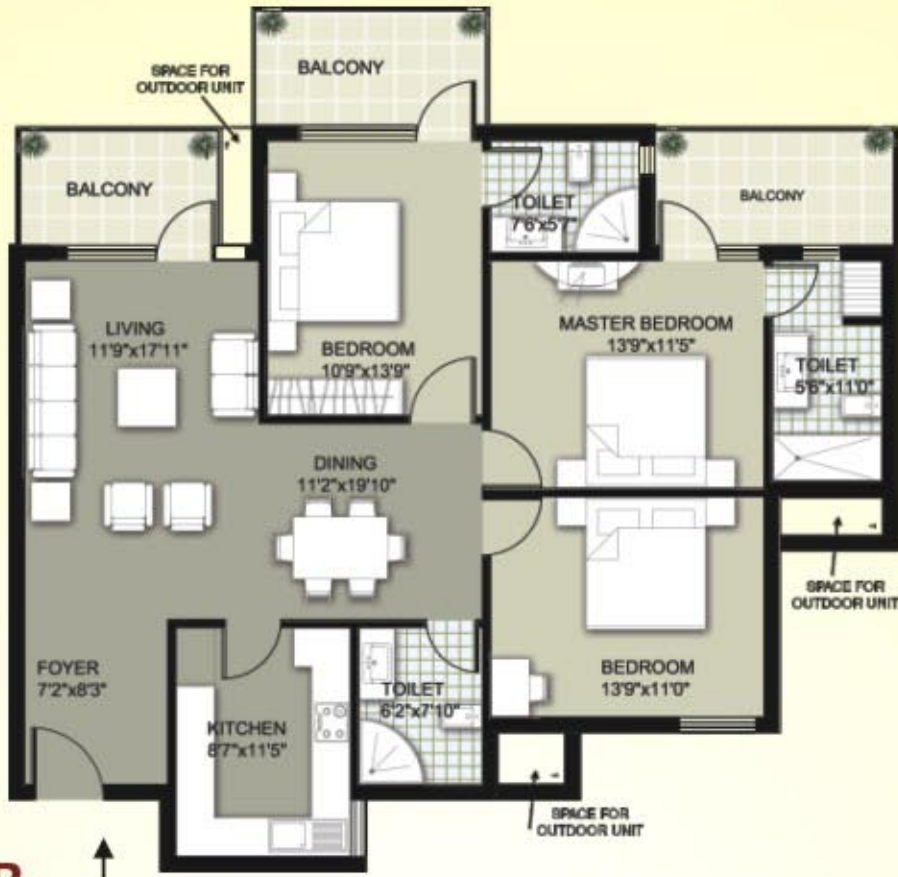
*at harima*

Exclusive Luxury Homes  
Sector-109, Gurgaon (Near Delhi Border)

- In the interest of maintaining high standards, all floor plans, layout plans, areas, dimensions and specifications are indicative and are subject to change as decided by the company or by any competent authority
- Soft furnishing, furniture and gadgets are not part of the offering

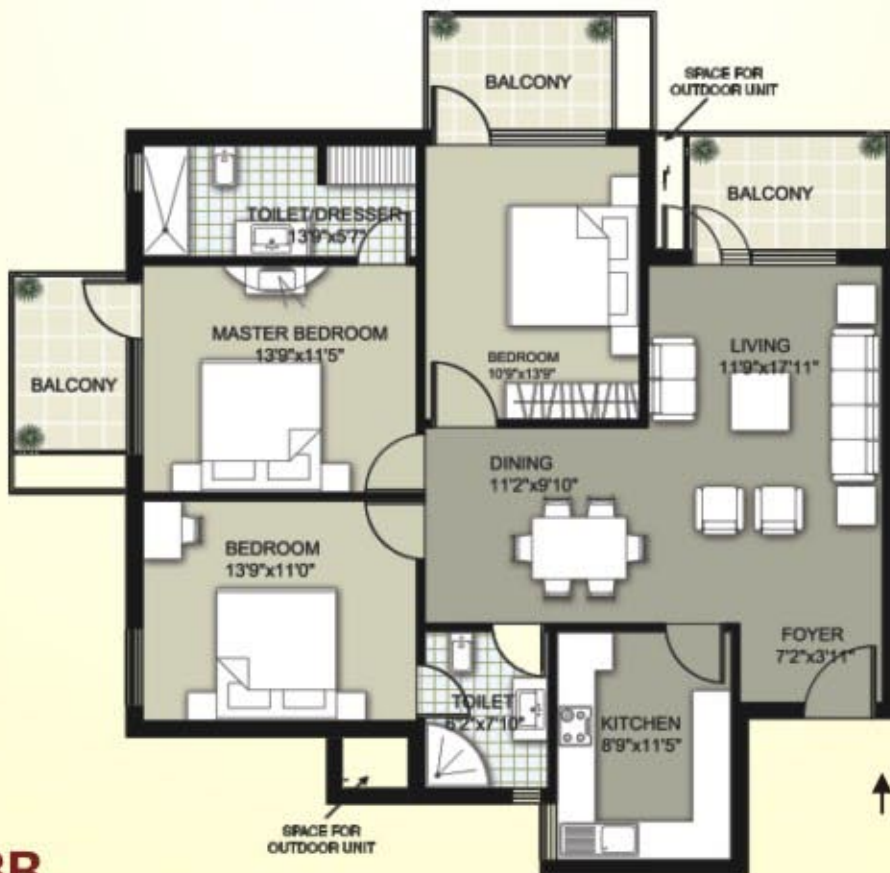


**RAHEJA**  
DEVELOPERS  
BUILDING. ADVANCED. LIFESTYLES  
An ISO 9001:2000 certified company



**3 BR  
TYPE B**

Sales Area : 1755 sq. ft.



**3 BR  
TYPE C**

Sales Area : 1640 sq. ft.

LAYOUT PLAN

*at harima*  
Exclusive Luxury Homes  
Sector-109, Gurgaon (Near Delhi Border)

- In the interest of maintaining high standards, all floor plans, layout plans, areas, dimensions and specifications are indicative and are subject to change as decided by the company or by any competent authority
- Soft furnishing, furniture and gadgets are not part of the offering



**RAHEJA**  
DEVELOPERS  
BUILDING . ADVANCED . LIFESTYLES  
An ISO 9001:2000 certified company

## ATHARVA REGAL SPECIFICATIONS

| Location                        | Floors  | External fenestrations                                      | Fittings and Fixtures  | Walls  | Internal fenestrations   | Ceiling  |
|---------------------------------|---|---|--|--|--|--|
| Living Room                     | Italian stone finish tiles with appropriate border  | Floor to ceiling powder coated aluminium framing with glass | Designer lights and Modular Switches   | Appropriate Surface Treatment with Plastic emulsion paint of pleasing shades | Moulded Indian/Imported frames with coloured glass               | White Plastic emulsion paint with appropriate cornices & moulding design |
| Dining Room                     | Italian stone finish tiles with appropriate border  | Floor to ceiling powder coated aluminium framing with glass | Designer lights and Modular Switches   | Appropriate Surface Treatment with Plastic emulsion paint of pleasing shades | Moulded Indian/Imported frames with coloured/ tinted/clear glass | White Plastic emulsion paint with appropriate cornices & moulding design |
| Bed Rooms                       | Laminated/wooden flooring with appropriate border   | Floor to ceiling powder coated aluminium framing with glass | Designer lights and Modular Switches   | Appropriate Surface Treatment with Plastic emulsion paint of pleasing shades | Moulded Indian/Imported frames with coloured/ tinted/clear glass | White Plastic emulsion paint with appropriate cornices & moulding design |
| Toilet                          | Granite/Marble/ Designer tiles  | Powder coated Aluminium framing with clear glass            | Master toilet, single lever CP fittings, Shower Panel in toilet, appropriate sanitary fixtures, granite counter with concealed hot water supply. | Appropriate Ceramic/Granite/ Stone tiles upto the ceiling level              | Moulded Indian/Imported frames with coloured/ tinted/clear glass | White Plastic emulsion paint with appropriate cornices & moulding design |
| Modular Kitchen                 | Granite/Marble/ Appropriate tiles   | Powder coated Aluminium framing with clear glass            | Granite counter, stainless steel sink and drain board, flexible stainless steel fittings with concealed hot water supply                         | Appropriate Ceramic tiles upto 2' above the counter                          | Moulded Indian/Imported frames with coloured/ tinted/clear glass | White Plastic emulsion paint with appropriate cornices & moulding design |
| Dressing rooms/ Private sitting | Laminated/wooden flooring with appropriate border   | Floor to ceiling powder coated aluminium framing with glass | Designer lights and Modular Switches   | Smooth surface treatment with Plastic emulsion paint                         | Moulded Indian/Imported frames with coloured/ tinted/clear glass | White Plastic emulsion paint with appropriate cornices & moulding design |
| Servant Room                    | Ceramic tiles/ Marble   | Powder coated aluminium framing with clear glass            | Tube light with Anchor equivalent switches   | Plastic emulsion   | Moulded Indian/Imported frames with coloured/ tinted/clear glass | Plastic Emulsion Paint   |
| Balconies                       | Anti Skid Granite/ Marble finished tiles  |   | Selected Steel finish railing  | Weathercoat emulsion   | Steel and/or Glass   | White Plastic emulsion paint with appropriate cornices & moulding design |
| Lift Lobbies/ Corridors         | Granite/ Imported Marble tiles  |   | Airconditioned Reception on Ground Floor, Planters, Sensor operated lighting in lobbies, cameras & appropriate Interior Decorations              | Appropriate Surface treatment with Plastic emulsion / Textured paint         | Moulded Indian/Imported frames clear glass                       | White Plastic emulsion paint with appropriate cornices & moulding design |
| Entrance Foyer                  | Imported Marble Floor with other appropriate stone finishes for design  |   | Planters & appropriate Interior Decorations  | Granite/Marble finished tile cladding upto 2100 mm and textured paint above  | Moulded Indian/Imported frames with coloured/ tinted/clear glass | POP False ceiling with Plastic emulsion paint                            |
| Structure                       | Earth-quake resistant (with latest seismic code), RCC framed structure with external brick/block walls and internal plaster board paneling, central music, internet with brick filler walls |   |  |  |  |  |
| Electrical                      | Copper Electrical wiring throughout in concealed conduit with provision for light points, power points, TV and telephone sockets with protective MCB's                                      |   |  |  |  |  |
| External finish                 | All weather textured paint with stone/aluminium composite cladding and grit work at selected areas  |   |  |  |  |  |
| Club Facility                   | Swimming pool with change rooms, multipurpose room, multi gym, Outdoor sports facilities like tennis courts   |   |  |  |  |  |
| Amenities                       | 24 hrs. power back-up, Primary School, Shopping Complex, Modular Kitchen, Air-conditioned split unit in each Bedroom and Drawing/Dining except servant room                                 |   |  |  |  |  |

Note :

1. Fenestrations opening on to a balcony shall be considered as internal fenestrations.
2. In the quest for excellence some of the specifications may have to be revised.

APARTMENT NO:

Specifications are subject to change in keeping with high quality standards as decided by competent authority/Company.

\*Specifications as on 4th December\* 2007.

Exclusive Luxury Homes  
Sector-109, Gurgaon (Near Delhi Border)

# atharva



**RAHEJA**  
DEVELOPERS  
BUILDING ADVANCED LIFESTYLES

An ISO 9001:2000 certified company

*atharva*

Exclusive Luxury Homes  
Sector-109, Gurgaon (Near Delhi Border)

SITE PLAN (15 ACRES)



## SITE PLAN



## ELEVATION

*atharva*

Exclusive Luxury Homes  
Sector-109, Gurgaon (Near Delhi Border)



**RAHEJA**  
DEVELOPERS

BUILDING - ADVANCED - LIFESTYLES

An ISO 9001:2000 certified company